



General Purpose Stem Thermometer – 63mm

- 63mm (Nominal) Diameter
- Bottom or Back Stem Pocket
- Direct Mounting Only
- Accuracy Class 2
- Bottom stem Liquid expansion
- Back stem Bi-Metal
- Low Cost

Description

The TG2006 is designed specifically for HVAC, air conditioning markets coupled with mechanical, heating and ventilation services.

These thermometers are designed for applications and use according to European Standards BS EN13190.

Robust, reliable and supplied complete with a ½" BSPT (tapered) brass pocket. The movement is liquid expansion and the case is ABS plastic. Shatter resistant push fit acrylic window, single scale °C dial. Class 2 accuracy. UI EN13190:2003. 9mm diameter brass rigid stem where the length is measured from the top of the pocket hex.

Offered in both bottom stem and centre back, with options for temperature ranges and stem length.

All Series TG2006 supplied complete with matched pocket.



Description

An affordable general purpose stem type thermometer. 63mm diameter face with options of temperature ranges and stem size. Both thermometers are provided with pockets and options of size.



Beschreibung

Ein erschwingliches Stabthermometer für allgemeine Zwecke. 63 mm Durchmesser Gesicht mit Optionen für Temperaturbereiche und Schaftgröße. Beide Thermometer sind mit Taschen und Größenoptionen ausgestattet.



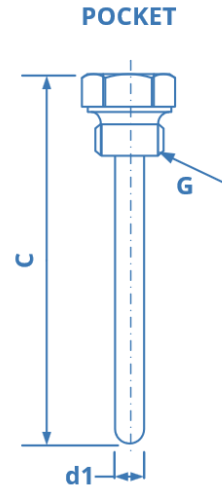
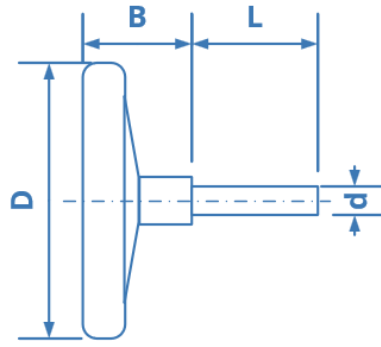
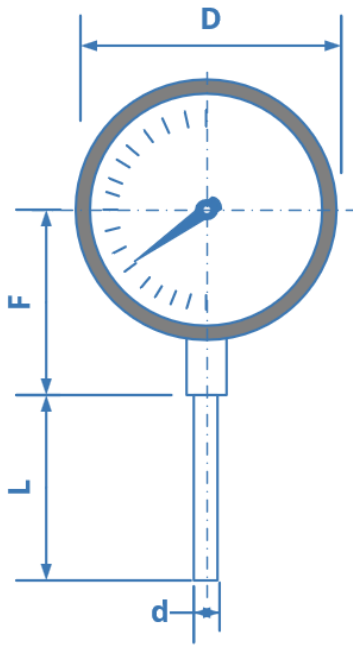
Descripción

Un termómetro asequible de uso general tipo vástago. Cara de 63 mm de diámetro con opciones de rangos de temperatura y tamaño de vástago. Ambos termómetros están provistos de bolsillos y opciones de tamaño.



Description

Un thermomètre à tige à usage général abordable. Face de 63 mm de diamètre avec options de plages de température et de taille de tige. Les deux thermomètres sont fournis avec des poches et des options de taille.



Gauge Dimensions in mm

| Size | D | F | L | B | d | Weight g |
|------|----|----|----|----|---|----------|
| 63 | 62 | 50 | 47 | 10 | 9 | 149 |

Pocket Dimensions in mm

| Size | G | C | d1 | Mat | Weight g |
|------|-----------|--------------------------------|----|--------------|-----------|
| 63 | 1/2" BSPT | 50mm or 100mm including thread | 60 | 50mm Brass | 50mm 40g |
| | | | | 100mm Copper | 100mm 60g |

| 63mm (Nominal Diameter) Bottom Stem/Pocket Direct Mounting Only Accuracy Class 2 | Single Scale | Stem/Pocket Length | Type |
|---|--------------|--------------------|------------------|
| | -30/+50°C | 5cm | Liquid Expansion |
| | 0/+60°C | | |
| | 0/+120°C | | |
| | -30/+50°C | 10cm | |
| | 0/+60°C | | |
| 0/+120°C | | | |

| 63mm (Nominal Diameter) Centre Back Stem/Pocket Direct Mounting Only Accuracy Class 2 | Single Scale | Stem/Pocket Length | Type |
|--|--------------|--------------------|----------|
| | -30/+50°C | 5cm | Bi-Metal |
| | 0/+60°C | | |
| | 0/+120°C | | |
| | -30/+50°C | 10cm | |
| | 0/+60°C | | |
| 0/+120°C | | | |

Description

Nominal Size

63mm

Accuracy

BS EN13190-Class 2

Scales

°C Only (Black) for 0/60°C & 0/120°C Ranges

°C Only (Red/Black) for -30/+50°C Range

Ranges

-30/+50°C Temperature

0/60°C Temperature

0/120°C Temperature

Mounting Options

Bottom

Back

Ingress Protection

IP40 as per EN 60529

Case

ABS Plastic

Window

Acrylic, Crystal Clear-Push Fit

Temperature Movement

Precision Element

Operated by Hydrocarbon Liquid Expansion

Pointer- Black

Dial

Aluminium White

Thermometer Stem - Brass

9mm Dia x 49mm

9mm Dia x 99mm

Pocket

Brass - 1/2" BSPT x 50mm including Hexagon

Brass - 1/2" BSPT x 100mm including Hexagon

External Tube 12.5mm, Internal Tube 10mm

Options